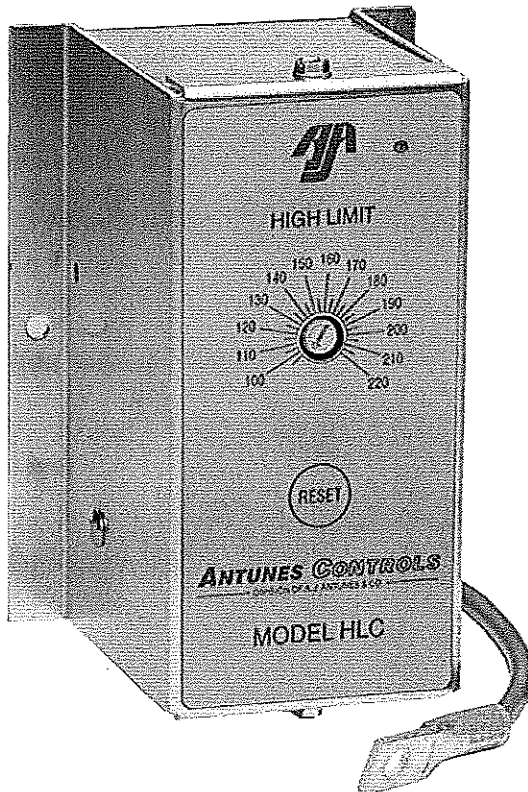


**High Limit Control**  
**Model HLC/Hi Limit**



**Model HLC/Hi Limit**

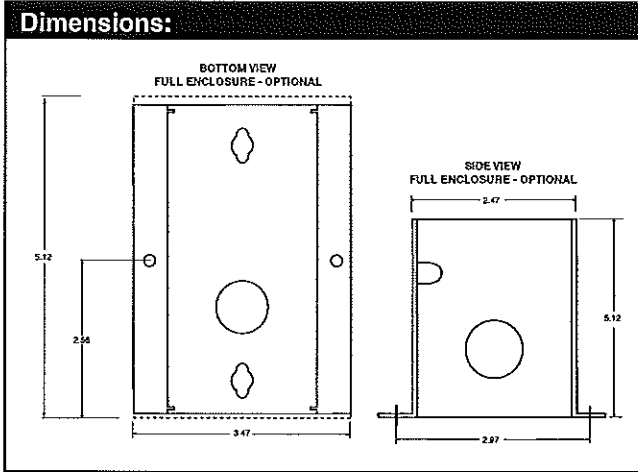
Antunes Controls newly designed model HLC (High Limit Control), is a state-of-the-art electronic high limit controller with a manual reset.

This compact easy to install device can be mounted to any suitable flat surface. The HLC offers a bolt down sensor, which is available in various lengths.

**Features:**

- High Limit with Manual Reset
- Electronic Control for Reliability
- UL-353 and Applicable Parts of UL 991 Approval
- Available with Various Sensor Lengths
- Mountable On Any Flat Surface
- Replaceable Sensor
- Fault Indication LED
- Fail Safe Design





**Fault Indication:** When the LED is "ON" the unit is latched and in a safe condition (relay open). It can only be reset when the fault condition is cleared.

**Fault Conditions:** Over temperature (compared to setpoint).  
Open or shorted sensor.  
Any on-board component failure.

**Specifications:**

**Sensor Type:** 100K Thermistor (Dual) - Length (15 ft.)  
Other lengths available upon request.

**Accuracy:** +/-3°F of Set Point

**Power Input:** 24 Vac, 120 Vac

**Control Operation:** High Limit - Opens on Temperature Rise

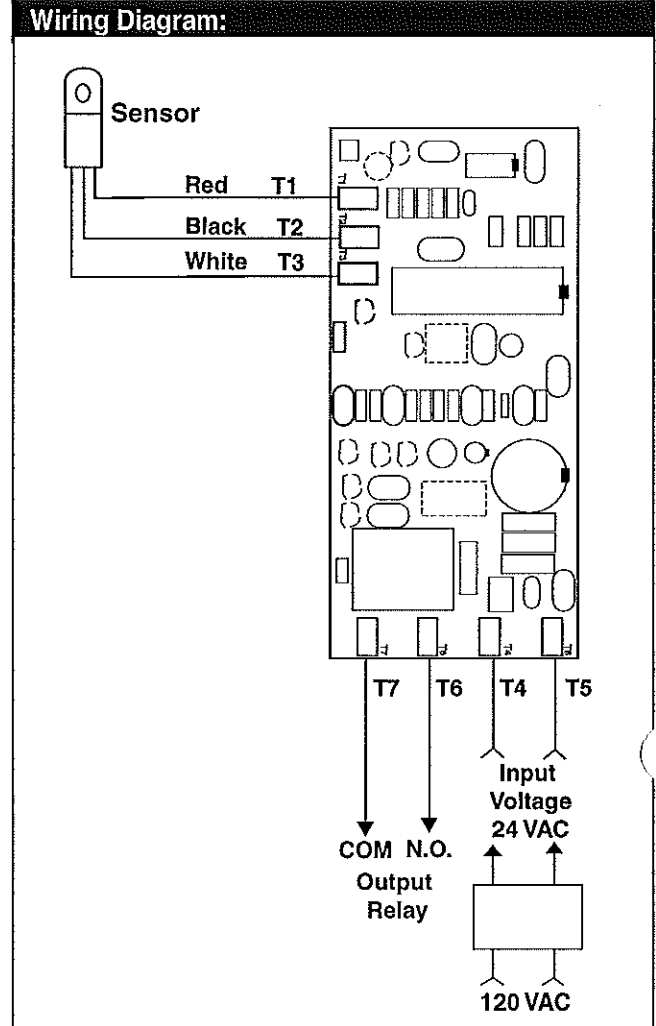
**Output Ratings:** High Limit - 8 Amp SPST Relay (Resistive Load)

**Adjustable Temperature Range:** High Limit: 180° to +300°F/  
or 100° to +220°F

**Ambient Operating Temperature:** -30° to 140°F  
(-35° to +60°C)

**Connections:** 1/4" Quick Connects,

**Package:** Aluminum "C" Bracket  
Full Enclosure w/conduit knockout (optional)



**Connections:**  
**Thermistor Input** - T1, T2 & T3 (100K ohm @25°C)  
**Power Input** - T4 & T5 (24-120 VAC)  
**High Limit Relay** - T6 (N.O.), T7(COM)

**Limitation of Liability.** If it is understood and agreed that seller's liability whether in contract, in tort, under any warranty, in negligence or otherwise, shall not exceed the return of the amount of the purchase price paid by purchaser and under no circumstances shall seller be liable for special, indirect or consequential damages. The price stated for the equipment is a consideration in limiting seller's liability. No action, regardless of form, arising out of the transactions may be brought by purchaser more than one year after the cause of action has accrued.