



BASO Gas Products LLC

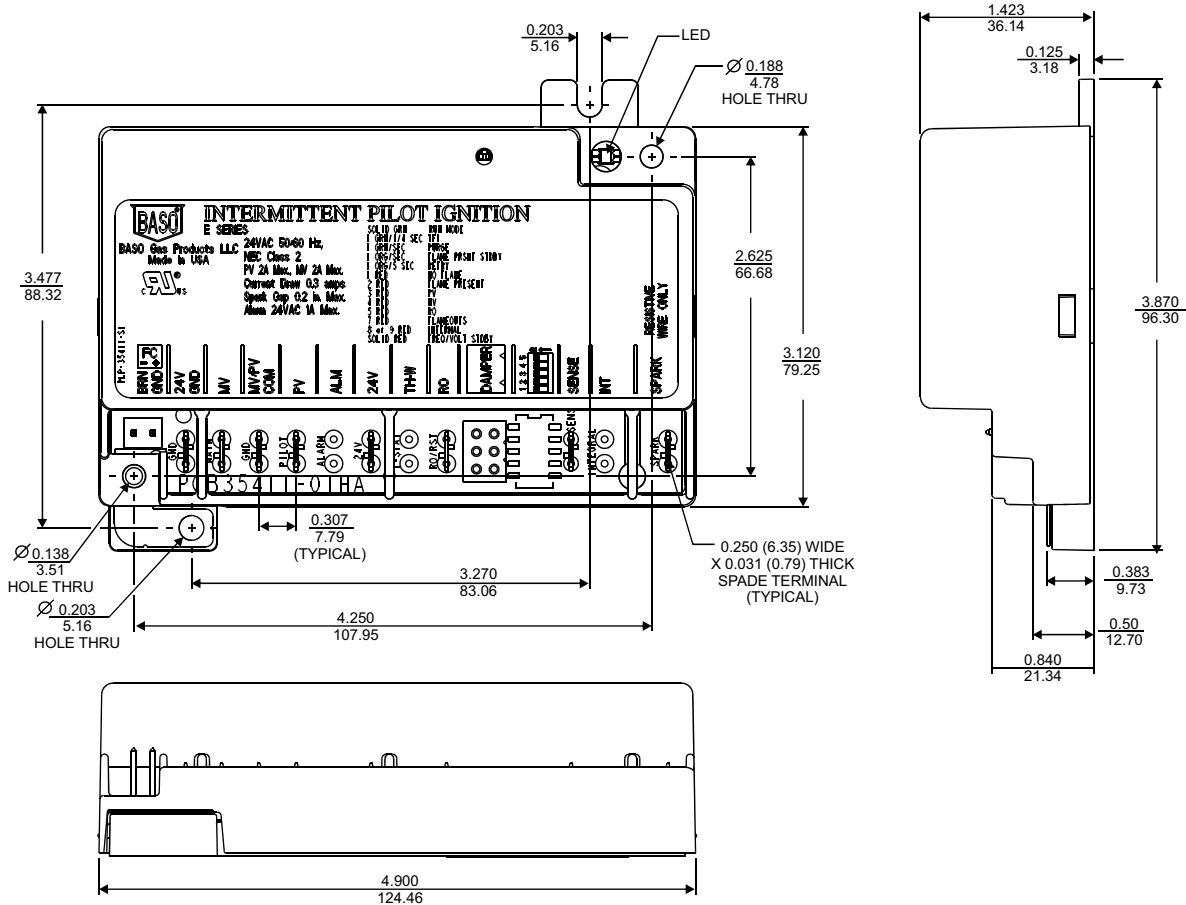
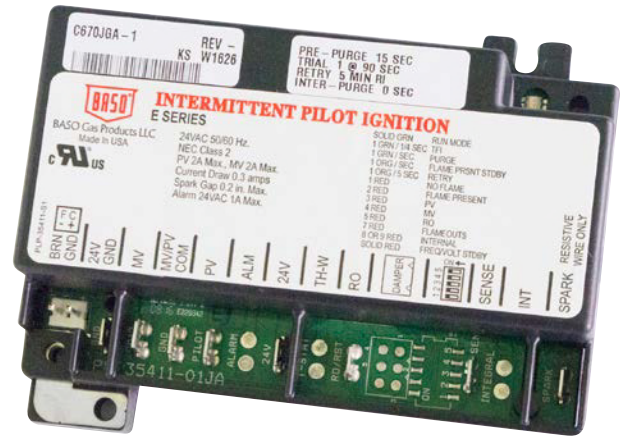
24-Volt Intermittent Pilot Ignition Control

Description

The Intermittent Spark ignition is a microprocessor-based ignition control. The microprocessor provides a reliable software control of all the timings and operates a diagnostic Light-Emitting Diode (LED). The BASO® intermittent pilot ignition provides ignition sequence, flame monitoring and safety shut-off for intermittent pilot boilers, furnaces and other heating appliances. Four mounting hole positions, two outer holes that match Honeywell and Fenwal.

Agency Listing

- UL Recognized File number MH2926-20160601
- Design file MH2926 UL 60730-1, UL 60730.2-5
- Software conforms to UL 60730 requirements
- EC Type Examination Certification number EC-657989 EN 298:2012



Dimensions (in./mm)

Note: Check for availability of the 120 volt.

Selection Chart

Part Number	Replaces	Retry Minutes	Pre-Purge Seconds	Trial for Ignition Seconds	Inter-Purge Seconds	Sensing	Damper Plug/ Rollout Switch
C661AHA-1C	BG1600M00EK-1AAC	0	0	Infinite	0	Remote	No/No
C661ABA-1C	BG1600M00EM-1ADC	0	0	1 @ 8	15	Remote	No/No
C661AFA-1C	BG1600M00EP-1ADC	0	0	1 @ 50	15	Remote	No/No
C670AGA-1C	BG1600M00ER-1BDC	0	0	1 @ 85	15	Remote	No/Yes
C661BEA-1C	BG1600M00FF-1ADC	0	4	1 @ 25	15	Remote	No/No
C661BFA-1C	BG1600M00FP-1ADC	0	4	1 @ 50	15	Remote	No/No
C661BGA-1C	BG1600M00FT-1ADC	0	4	1 @ 120	15	Remote	No/No
C670JGA-1C	BG1600M01CR-1BDC	5	15	1 @ 85	0	Remote	No/Yes
C661PGA-1C	BG1600M02CR-1ADC	60	15	1 @ 85	15	Remote	No/No
C661KEA-1C	BG1600M03BF-1AGC	5	30	3 @ 25	30	Remote	No/No
C661JGA-1C	BG1600M03CR-1AGC	5	15	3 @ 85	30	Remote	No/No
C664AHA-1C	BG1600M10EK-1AAC	0	0	Infinite	0	Remote	Yes/No
C664ABA-1C	BG1600M10EM-1ADC	0	0	1 @ 8	15	Remote	Yes/No
C664AGA-1C	BG1600M10ER-1ADC	0	0	1 @ 85	15	Remote	Yes/No
C664BEA-1C	BG1600M10FF-1AAC	0	4	1 @ 25	15	Remote	Yes/No
C664BGA-1C	BG1600M10FR-1AAC	0	4	1 @ 85	0	Remote	Yes/No
C664FGA-1C	BG1600M11ER-1ADC	5	0	1 @ 85	15	Remote	Yes/No
C631AGA-1C	BG1600M20EJ-1AAC	0	0	1 @ 90	15	Integral	No/No
C631A9A-1C	BG1600M20EP-1ADC	0	0	1 @ 50	15	Integral	No/No
C634AFA-1C	BG1600M30EP-1ADC	0	0	1 @ 50	15	Integral	Yes/No

Note: Resistive spark wire harness available. See page 108.

Replacement Chart

Part Number	Replaces	Johnson Controls	Fenwal	Honeywell
C661DEA-1C	BG1600M00CF-1ADC	G770LGD-1		
C661AEA-1C	BG1600M00EF-1ADC	G770LGA-1, -20	35-630501-003	
C661AHA-1C	BG1600M00EK-1AAC	G67AG-3, -4, -8, -10, -20, G67BG-2, -3, -4, -5, -5R, G600AY-1, G670AW-1		
C661ABA-1C	BG1600M00EM-1ADC	G770KGA-1, -3		
C661AFA-1C	BG1600M00EP-1ADC	G770MGA-1, -2, -5		
C670AGA-1C	BG1600M00ER-1BDC	G770RJA-1		
C661AFA-1C	BG1600M00ET-1ADC	G770NGA-1		
C661BEA-1C	BG1600M00FF-1ADC	G770LGC-1, -2, -10, G600LY-1		
C661BFA-1C	BG1600M00FP-1ADC	G770MGC-1, -3, G600MX-1		
C661BGA-1C	BG1600M00FT-1ADC	G770NGC-4, -7, G600RX-1, G600NX-1		
C670JGA-1C	BG1600M01CR-1BDC	G775RJD-1, -2, -13, -14, -15		
C661FCA-1C	BG1600M01ER-1ADC	G775RGA-1, -2, -3		
C661PGA-1C	BG1600M02CR-1ADC	G776RGD-11, -14		
C661KEA-1C	BG1600M03BF-1AGC	G770BGJ-11		
C661JGA-1C	BG1600M03CR-1ADC	G770DLD-1		
C664AEA-1C	BG1600M10EF-1ADC	G770LHA-1, -2		
C664AHA-1C	BG1600M10EK-1AAC	G600AX-1, -2, -3		
C664ABA-1C	BG1600M10EM-1ADC	G770KHA-2		
C664AFA-1C	BG1600M10EP-1ADC	G770MHA-2		
C664AGA-1C	BG1600M10ER-1ADC	G770RHA-1, -2		
C664BEA-1C	BG1600M10FF-1AAC	G600LX-1, -1CM, -2, G770MHC-1C		
C664BBA-1C	BG1600M10FM-1AAC	G67KG-1, G600KX-1		
C664BFA-1C	BG1600M10FP-1ADC	G600MX-1, G770MHC-1		
C664BGA-1C	BG1600M10FR-1AAC	G600RX-1		
C664BGA-1C	BG1600M10FT-1ADC	G600NX-1, G770NHC-1		
C664FGA-1C	BG1600M11ER-1ADC	G775RHA-1, -2		S8600M-1013
C631AGA-1C	BG1600M20EJ-1AAC	G777RGA-1G		
C631A9A-1C	BG1600M20EP-1ADC	G777MGA-1		
C634AFA-1C	BG1600M30EP-1ADC	G777MHA-1		