



5500-103M



5500-234M

ELECTRIC INFINITE SWITCHES

5500M Series

The Robertshaw® 5500 M Series Infinite Switch is a voltage sensing (parallel circuit) infinite switch designed to replace the current VSI (INF) switch.

The 5500 M series is the replacement control for the current model INF. This patented control has the smallest physical dimensions possible to adapt to common application specifications and maintains the highest level of quality and performance.

Features and Benefits

- Small compact design
- Variety of shaft lengths and configurations
- Push To Turn (PTT) and Non Push To Turn (Non-PTT) available
- Controllable range of output power with Low to High detents

Specifications

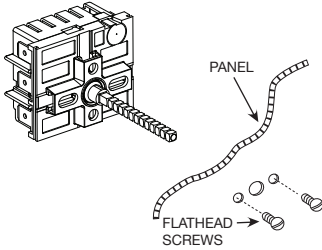
Part Numbers	Description	% Input at Low	Dial	Dial Shaft Type	Dial Shaft Length	Mounting Type	Electrical Rating
5500-102M	Residential 120V AC Uni-Kit®	5%	None	A	2" (50,8mm)	Universal	100 to 3600 Watts at 240V AC 15 Amps @ 200°F (93°C)
5500-134M	Commercial 120V AC Uni-Kit	5%	Black	D	2" (50,8mm)	Universal	100 to 3600 Watts at 240V AC 15 Amps @ 200°F (93°C)
5500-135M	Commercial 120V AC Uni-Kit	5%	White	D	2" (50,8mm)	Universal	100 to 3600 Watts at 240V AC 15 Amps @ 200°F (93°C)
5500-200M	Residential 240V AC Uni-Kit Push-to-Turn	5%	None	A	2" (50,8mm)	Universal	100 to 3600 Watts at 240V AC 15 Amps @ 200°F (93°C)
5500-202M	Residential 240V AC Uni-Kit	5%	None	A	2" (50,8mm)	Universal	100 to 3600 Watts at 240V AC 15 Amps @ 200°F (93°C)
5500-234M	Commercial 240V AC Uni-Kit	5%	Black	D	2" (50,8mm)	Universal	100 to 3600 Watts at 240V AC 15 Amps @ 200°F (93°C)
5500-235M	Commercial 240V AC Uni-Kit	5%	White	D	2" (50,8mm)	Universal	100 to 3600 Watts at 240V AC 15 Amps @ 200°F (93°C)
5500-287M	Residential 240V AC PTT Uni-Kit - Whirlpool	5%	None	D	1 3/8" (34.925mm)	Screw	100 to 3600 Watts at 240V AC 15 Amps @ 200°F (93°C)
5502-303M	240V AC Infinite Switch	5%	None	P	1" (25.4mm)	Palnut	100 to 3600 Watts at 240V AC 15 Amps @ 200°F (93°C)
5502-350M	240V AC Infinite Switch	5%	None	P	1" (25.4mm)	Palnut	100 to 3600 Watts at 240V AC 15 Amps @ 200°F (93°C)
5502-448M	240V AC Infinite Switch	5%	None	P	.812" (20.63mm)	Screw	100 to 3600 Watts at 240V AC 15 Amps @ 200°F (93°C)
5502-468M	240V AC Infinite Switch	22.5%	None	P	.875" (22.23mm)	Palnut	100 to 3600 Watts at 240V AC 15 Amps @ 200°F (93°C)
5502-915M	120V AC Infinite Switch	5%	None	P	.812" (20.63mm)	Screw	100 to 3600 Watts at 240V AC 15 Amps @ 200°F (93°C)



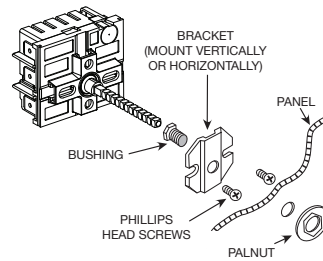


Product Drawings

Screw Mount VENTS UP

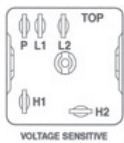


Palnut Mount VENTS UP



Wiring Robertshaw INF To Robertshaw 5500M Series

Connect wires from old switch to new switch as follows:

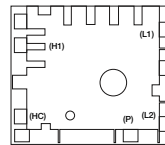


INF Switch Terminal

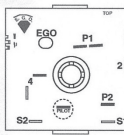
- L1 connect to
- L2 connect to
- P connect to
- H1 connect to
- H2 connect to

5500 M (MPA) Switch Terminal

- L1
- L2
- P
- H1
- HC



Wiring Ego To Robertshaw

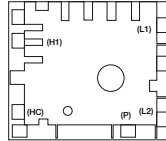


Old (EGO) Switch Terminal

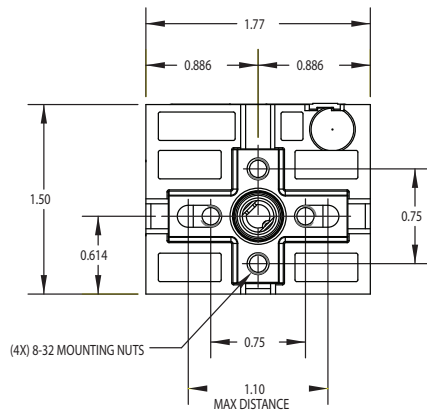
- P1 connect to
- P2 connect to
- Pilot connect to
- 4 connect to
- 2 connect to

5500 M (MPA) Switch Terminal

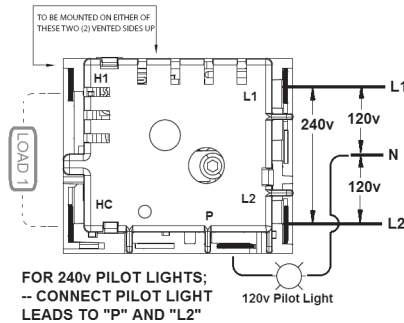
- L2
- L1
- P
- H1
- HC



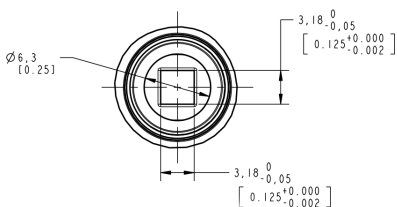
Mounting Dimensions



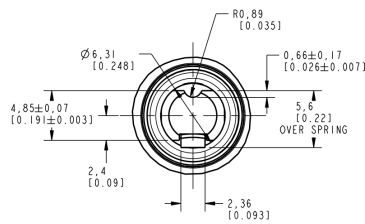
Wiring Schematic



Dial Shaft Type A



Dial Shaft Type D



Dial Shaft Type P

